

**CRA TRUST FUND
REVENUE**

Acct.#	Account Description	Actual FY 2009	Actual FY 2010	Budgeted FY 2011	Budgeted FY 2012
Taxes					
154-311.10-02	City Portion - Ad Valorem Taxes	263,412	193,965	166,435	138,908
		\$ 263,412	\$ 193,965	\$ 166,435	\$ 138,908
Intergovernmental					
154-334.50-16	Tarpon Avenue Landscaping	6,915	-	-	-
154-334.50-17	Pinellas Avenue Landscaping	15,000	-	-	-
154-338.10-01	Pinellas County - Ad Valorem	280,701	191,121	149,070	124,577
	Intergovernmental	\$ 302,616	\$ 191,121	\$ 149,070	\$ 124,577
Miscellaneous					
Interest					
154-361.10-00	Investment on Interest	1,123	1,308	7,200	7,750
154-361.10-05	Unrealized Gain (Loss)	-	(148)	-	-
154-361.10-16	Money Mkt - Wachovia	839	356	-	-
154-361.10-17	BB&T Public Savings	-	242	-	-
154-361.10-18	FDOT	36,352	-	-	-
154-361.30-01	Certificate of Deposit	31,791	13,964	-	-
154-361.80-03	0-2 Yr High Quality	35	206	-	-
	Total Interest	70,140	15,928	7,200	7,750
Cont/Donations Private Sector					
154-366.90-64	Mother Meres Park Landscape	-	700	-	-
	Total Cont/Donations Priv Sector	-	700	-	-
Other Miscellaneous					
154-369.30-01	Insurance	574	108	-	-
154-369.30-06	FDOT LFA	41,543	-	-	-
	Total Other	42,117	108	-	-
	Miscellaneous	\$ 112,257	\$ 16,736	\$ 7,200	\$ 7,750
Non-Revenues					
154-389.01-00	Carryover-Cash	-	-	727,506	255,833
	Non-Revenues	\$ -	\$ -	\$ 727,506	\$ 255,833
	CRA Trust	\$ 678,285	\$ 401,822	\$1,050,211	\$ 527,068

CRA TRUST FUND

Expenditure Summary

Expenditure Classification	Actual FY 2009	Actual FY 2010	Budgeted FY 2011	Budgeted FY 2012
Personnel Services	84,445	96,467	98,850	102,098
Operating Expenditures	61,450	227,120	31,232	30,400
Capital Outlay	284,540	293,330	616,469	100,000
Debt Service	-	-	-	-
Grants & Aids	-	-	150,000	135,000
Transfers	-	-	-	-
Reserves/Other	-	-	153,660	159,570
Total Expenditures	\$ 430,435	\$ 616,917	\$ 1,050,211	\$ 527,068

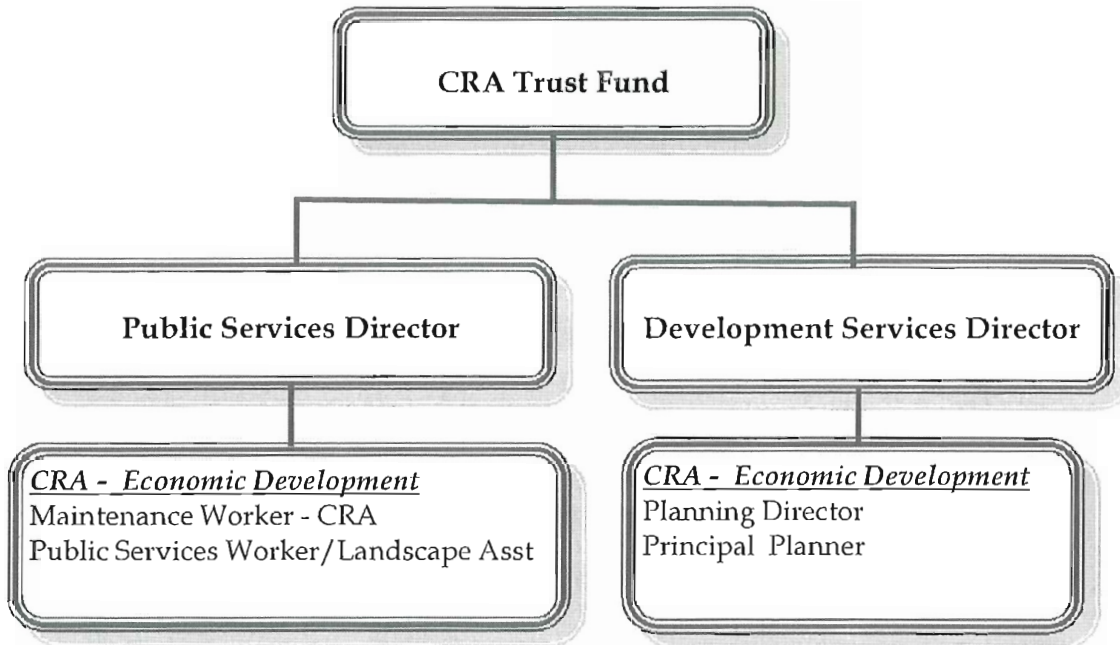
Expenditures by Division/Program

Division/Program	Actual FY 2009	Actual FY 2010	Budgeted FY 2011	Budgeted FY 2012
CDBG Commercial Revitalization	430,435	616,917	1,050,211	527,068
Total Expenditures	\$ 430,435	\$ 616,917	\$ 1,050,211	\$ 527,068

**CRA TRUST FUND
EXPENDITURES**

Acct #	Account Description	Actual FY 2009	Actual FY 2010	Budgeted FY 2011	Budgeted FY 2012
11	Executive Salaries	9,048	9,082	9,047	9,047
12	Regular Salaries & Wages	53,704	56,548	56,332	56,332
14	Overtime Pay	537	1,825	1,000	1,000
15	Special Pay	400	440	400	400
21	FICA Taxes	4,824	5,144	5,109	5,109
22	Retirement Contribution	4,289	5,907	5,810	5,810
23	Life & Health Insurance	9,827	15,871	19,249	20,668
24	Worker's Compensation	1,816	1,650	1,903	1,735
29	Salary Remuneration	-	-	-	1,997
	Personnel Services	\$ 84,445	\$ 96,467	\$ 98,850	\$ 102,098
31	Professional Services	12,530	190,043	7,500	7,500
40	Travel Per Diem	-	4,593	1,000	1,000
44	Rents & Leases	2,524	1,456	-	-
45	Insurance	-	932	832	-
48	Promotional Activities	-	1,762	-	-
52	Operating Supplies	45,901	26,844	20,500	20,500
54	Books-Publ-Subscriptions	495	945	900	900
55	Training	-	545	500	500
	Operating Expenditures	\$ 61,450	\$ 227,120	\$ 31,232	\$ 30,400
61	Land	-	151,663	-	-
63	Improvements O/T Buildings	284,540	141,667	616,469	100,000
	Capital Outlay	\$ 284,540	\$ 293,330	\$ 616,469	\$ 100,000
83	Building Grant Program	-	-	150,000	135,000
	Grants & Aids	\$ -	\$ -	\$ 150,000	\$ 135,000
99	Other Non-Operating Uses	-	-	153,660	159,570
	Non-Operating	\$ -	\$ -	\$ 153,660	\$ 159,570
	CRA Trust Total	\$ 430,435	\$ 616,917	\$ 1,050,211	\$ 527,068

***CRA TRUST FUND - ECONOMIC DEVELOPMENT
PERSONNEL SCHEDULE***



Position Title	FY 2009	FY 2010	FY 2011	FY 2012
Planning Director*	0.10	0.10	0.10	0.10
Principal Planner*	0.10	0.10	0.10	0.10
Maintenance Worker - CRA	1.00	1.00	1.00	1.00
Public Services Worker/Landscape Assistant	1.00	1.00	1.00	1.00
Total	2.20	2.20	2.20	2.20

*These positions are charged 90% to Planning Dept. in General Fund and 10% to CRA Fund.