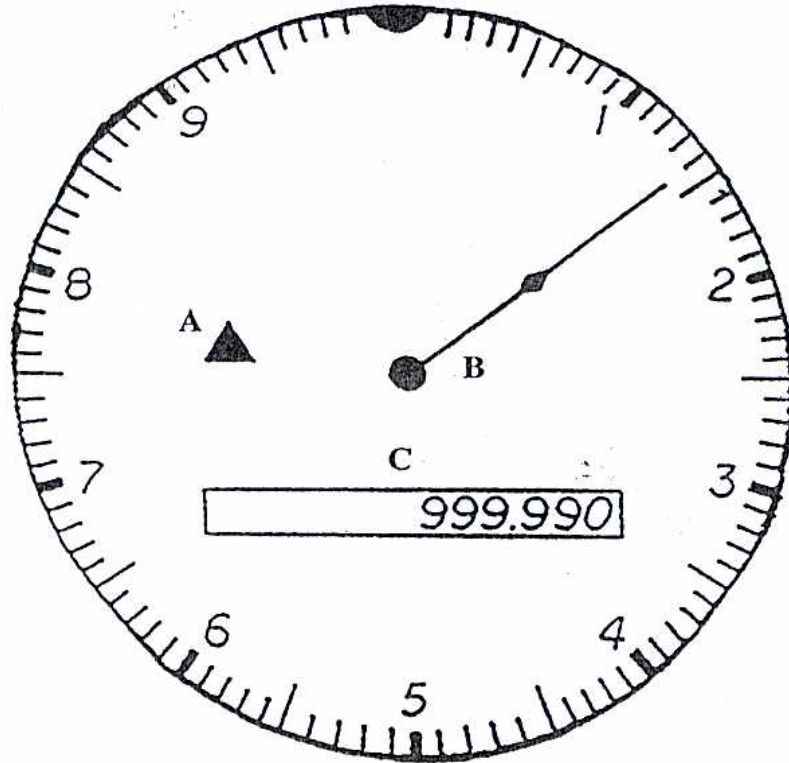


CITY OF TARPON SPRINGS-WATER DEPARTMENT 942-5609  
HOW TO MONITOR YOUR METER

- A- LEAK INDICATOR
- B- SWEEPHAND
- C- REGISTER



FACE OF METER

Each number represents one full gallon, each line represents 1/10 gallon. Every meter has a sweep hand. Each complete sweep of the face is 10 gallons. Water consumption is determined by reading the register. You may determine the amount of water used on a daily, weekly or monthly basis.

Example: Reading on register Monday - 100,000  
Friday - 103,000  
Water consumed - 3,000

Most meters have a leak indicator, triangular in shape or oval. To determine whether you have a leak:

1. Make sure no one is running water in your home.
2. Look at meter face, if sweep hand and/or leak indicator are moving, you have a leak. Many times a slow leak will not show movement visible to the eye, mark the location of sweep hand, leave for 1/2 hour, check again.

Locating leak:

1. If you have a shut off valve at your home, shut this off (make sure valve works), look at meter again, if it stopped moving, leak location is inside house. Start by checking toilets, hot water heater, faucets inside and out and water softener, if available.
2. If meter continues to move when valve is shut off, this indicates leak location is underground, between meter and house.
3. Listen for leak – in the quiet of the night is an excellent time for leak locating!

Author; Vickie Hague, 2005

GOOD LUCK!