

## Help Your Pipes— Don't Flush Those Wipes!

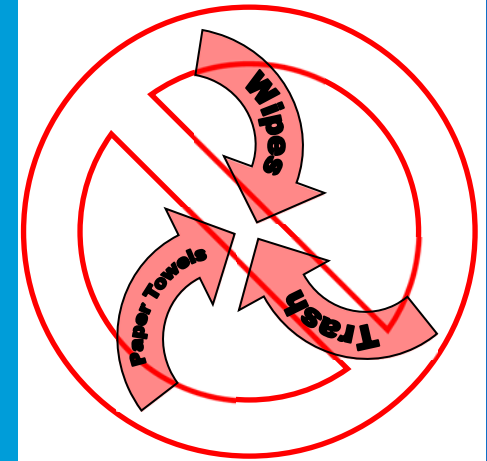
Even though they are advertised as “flushable” wipes doesn't mean they're flushable! These types of wipes are not biodegradable and are quickly becoming the leading cause of residential line clogs.

Please remember to send wipes to the trash to avoid a costly and inconvenient sewer back-up



## Protecting your plumbing and our environment

City of Tarpon Springs  
201 E. Pine Street  
Tarpon Springs, FL 34689  
Phone: (727) 942-5616  
[www.ctsfl.us](http://www.ctsfl.us)



## Flush This, NOT That

Protecting your  
plumbing and our  
environment

---

*From the City of  
Tarpon Springs  
Wastewater  
Division*

## Wipes Clog Pipes!

Place these items in the  
**TRASH** and **NOT** the toilet:

- Disinfecting wipes
- Paper towels
- Baby wipes
- Towelettes
- Mop refills



## NOT That...

---

Help keep the City of Tarpon Springs looking beautiful by preventing sewer overflows and reducing treatment cost by not placing trash/debris down your toilet!

What should always go in the garbage instead of the toilet?

- ◇ Wipes: Adult/Baby, Cleaning, & Makeup
- ◇ Feminine Hygiene Products
- ◇ Kitty Litter
- ◇ Paper Towels and Towelettes
- ◇ Diapers
- ◇ Dental Floss
- ◇ Band-Aids & Bandages
- ◇ Cotton Swabs
- ◇ Facial Tissues
- ◇ Mop refills
- ◇ Cigarettes

### HOW CAN YOU SAVE MONEY?

When landfill items, such as flushable wipes, are flushed down the toilet, they do not break down in water like toilet paper. Continued flushing of these items may result in clogging or breaking of pipes from homes or in the sewer system. This may lead to a sewer back-up into the residence.

However, even when no backups occur at the home, the City must employ expensive techniques to remove such items or to repair broken pipes.

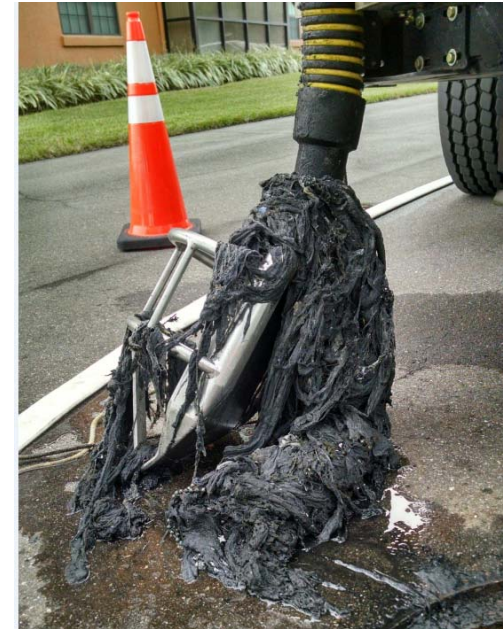
These types of repair and treatment takes a major toll on the City's operating budget and associated utility bills.

### HOW CAN YOU SAVE THE ENVIRONMENT?

When sewer systems are clogged or pipes are broken, this creates a sanitary sewer overflow (SSO). This means that any wastewater contents in the pipes or manholes will be discharged into the environment. This can have numerous effects on public health, recreation, & surface water quality.

70 percent of all SSOs are caused by line/main breaks or line blockages. (NRDC 2000)

**THIS MEANS THAT YOU CAN HELP THE CITY PREVENT LINE BREAKS AND LINE CLOGS!**



This was the result from sewer line cleaning to remove landfill items that should not have been flushed.

### Protecting your plumbing and our environment

---

City of Tarpon Springs  
201 E. Pine Street  
Tarpon Springs, FL 34689  
Phone: (727) 942-5616  
[www.ctsfl.us](http://www.ctsfl.us)