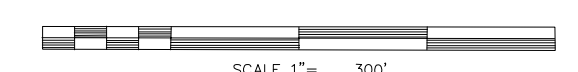


PROPERTY OWNERSHIP MAP
PINELLAS COUNTY

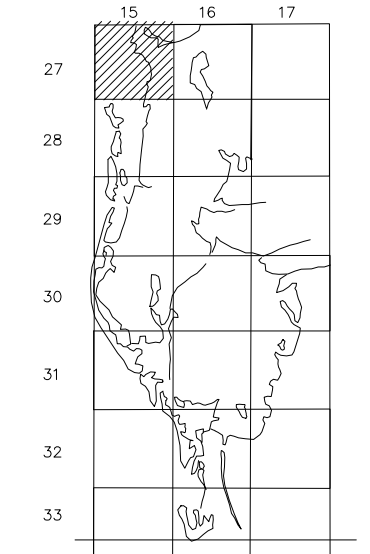
PAM DUBOV
PROPERTY APPRAISER



DATE OF MAP: 05/05/90



COUNTY LOCATOR



SHEET MATCH

PASCO	COUNTY
N02-27-15	N01-27-15 N06-27-16
S02-27-15	S01-27-15 S06-27-16

LEGEND

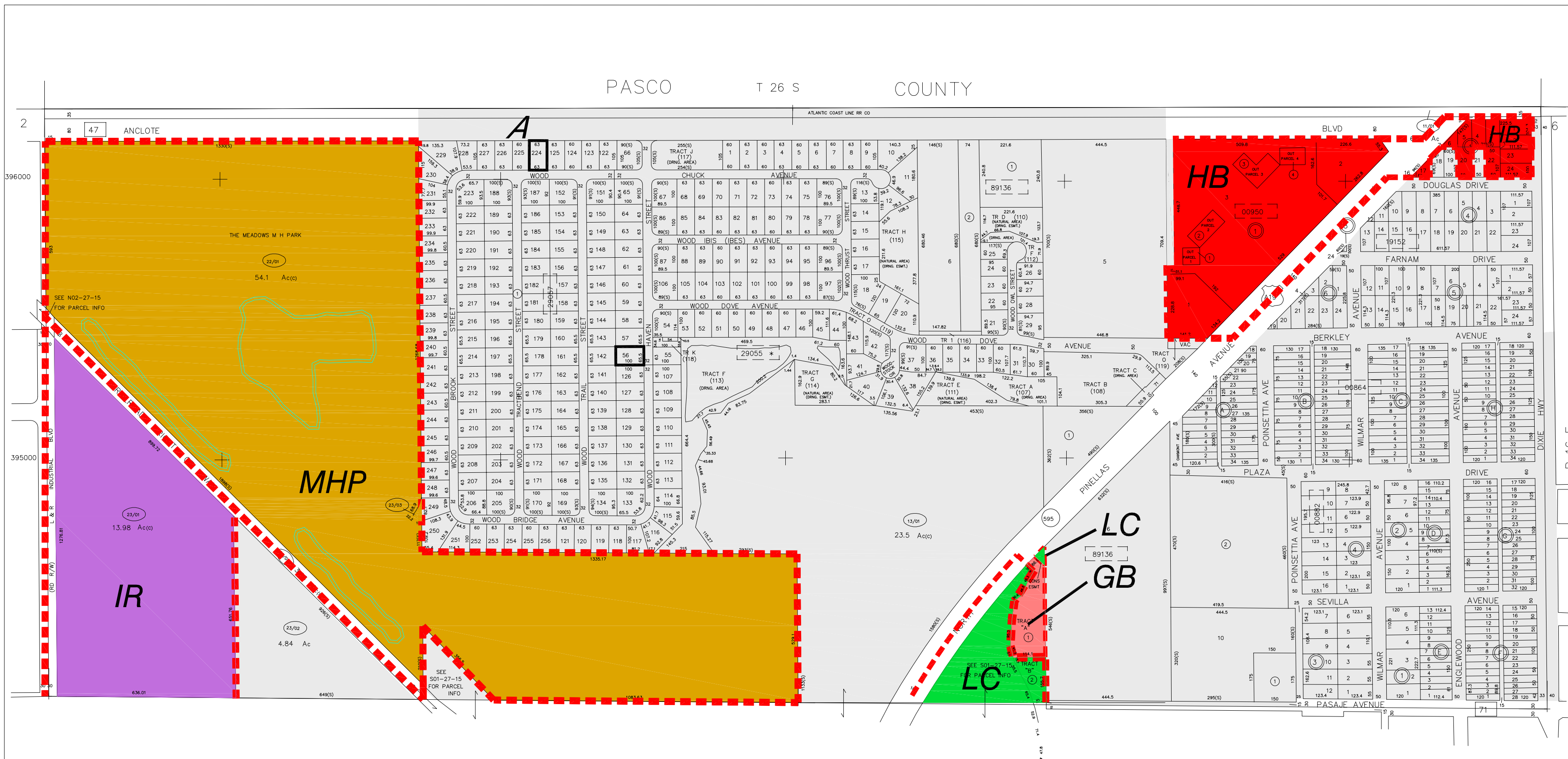
COUNTY LINE	---	AREA (FROM DEED)	10.5 Ac
CITY LIMIT LINE	---	AREA (CALCULATED)	10.5 Ac(c)
TAX DISTRICT LINE	---	DIMENSIONS (FROM DEED)	100.3
ROAD R/W	==	DIMENSIONS (SCALED)	100(5)
RAILROAD R/W	==	WATER	
SUB LINE	==	INTERSTATE HIGHWAY	(275)
PROPERTY LINE	==	U.S. HIGHWAY	(19)
LAND HOOK	==	STATE HIGHWAY	(60)
INTERIOR TRACT LINE OR ORIGINAL LOT LINE	---	COUNTY HIGHWAY	(1)
SUB LOT NUMBERS	31	ROADS OR STREETS	BY NAME
PARCEL NUMBER (W & B)	06/00	MAJOR TRANSMISSION LINES	POWER GAS OR OIL
BLOCK NUMBER	(2)		
STATE PLANE COORDINATES	375000 +	SECTION CORNERS	2 1 11 12
CHURCHES, SCHOOLS, CEMETERIES, AIRPORTS, GOVERNMENT LANDS ETC.	275000	BY NAME	ASSIGNED M & B PINELLAS FARMS/GROVES GEO-LOCATOR (BLK FIELD)
SUB NUMBER			200 100 300 400
SUB PARCEL NO.	(3)	OTHER ASSIGNED BLK/LOT DESIGNATOR	(3)

REVISIONS

DATE	BY	CHANGES OR ADDITIONS
12/01	PC	UPDATE/SPLIT
08/00	pc	misc corr
07/01	SAW	UPDATE/COMB
08/01	KD	UPDATE/SPLIT
05/96	JD	REDO COORD/EDGEMATCH

SECTION N 1/2 01
TOWN 27 SOUTH, RANGE 15 EAST
N01-27-15
MAP NUMBER

PASCO T 26 S COUNTY



A: ANNEXATION COVENANT
RESTRICTIVE COVENANT FOR ANNEXATION
1871 WOOD HAVEN ST.

* SEE PLAT FOR DETAIL

NO.	NAME	PB/ PG
00864	ALTA VISTA SUB * BLKS A TO H INCL., TARPON SPRINGS	09/134
00882	ALTA VISTA ADD * TARPON SPRINGS	16/066
00950	ANCLOTE CORNER	108/046
19152	CRESTVIEW * TARPON SPRINGS	17/060
29055	FOREST RIDGE PHASE 1	102/051
29057	FOREST RIDGE PHASE TWO	111/043
89136	TAMPA & TARPON SPRINGS LAND CO	H1/116

Produced by MDT V2.1, Copyright (c) 1991-1992, Pinellas County, FL, Property Appraiser. All Rights reserved.
ATTENTION: Although this map represents a geographically true image of accuracy and completeness, it was prepared for use in property assessment. Information on this document may be an abridgement of data out of date from the official, published records. Therefore, the user should not rely on this information as an alternative to a qualified survey. PLEASE CONSULT A LICENSED PROFESSIONAL LAND SURVEYOR FOR THE MOST ACCURATE PROPERTY INFORMATION ON RECORD.