

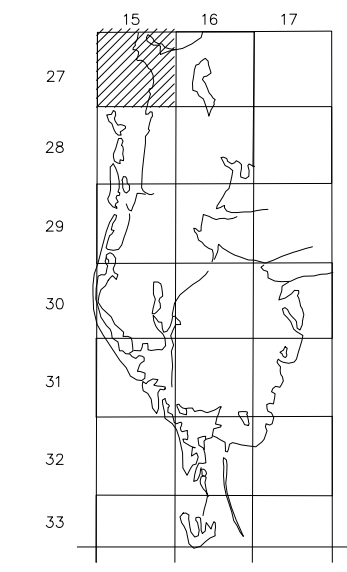
PROPERTY OWNERSHIP MAP  
PINELLAS COUNTY

PAM DUBOV  
PROPERTY APPRAISER

SCALE 1" = 300'  
DATE OF MAP: 05/09/90



COUNTY LOCATOR



SHEET MATCH

GULF OF MEXICO	PASCO COUNTY	COUNTY
	N04-27-15	N03-27-15
	S04-27-15	S03-27-15

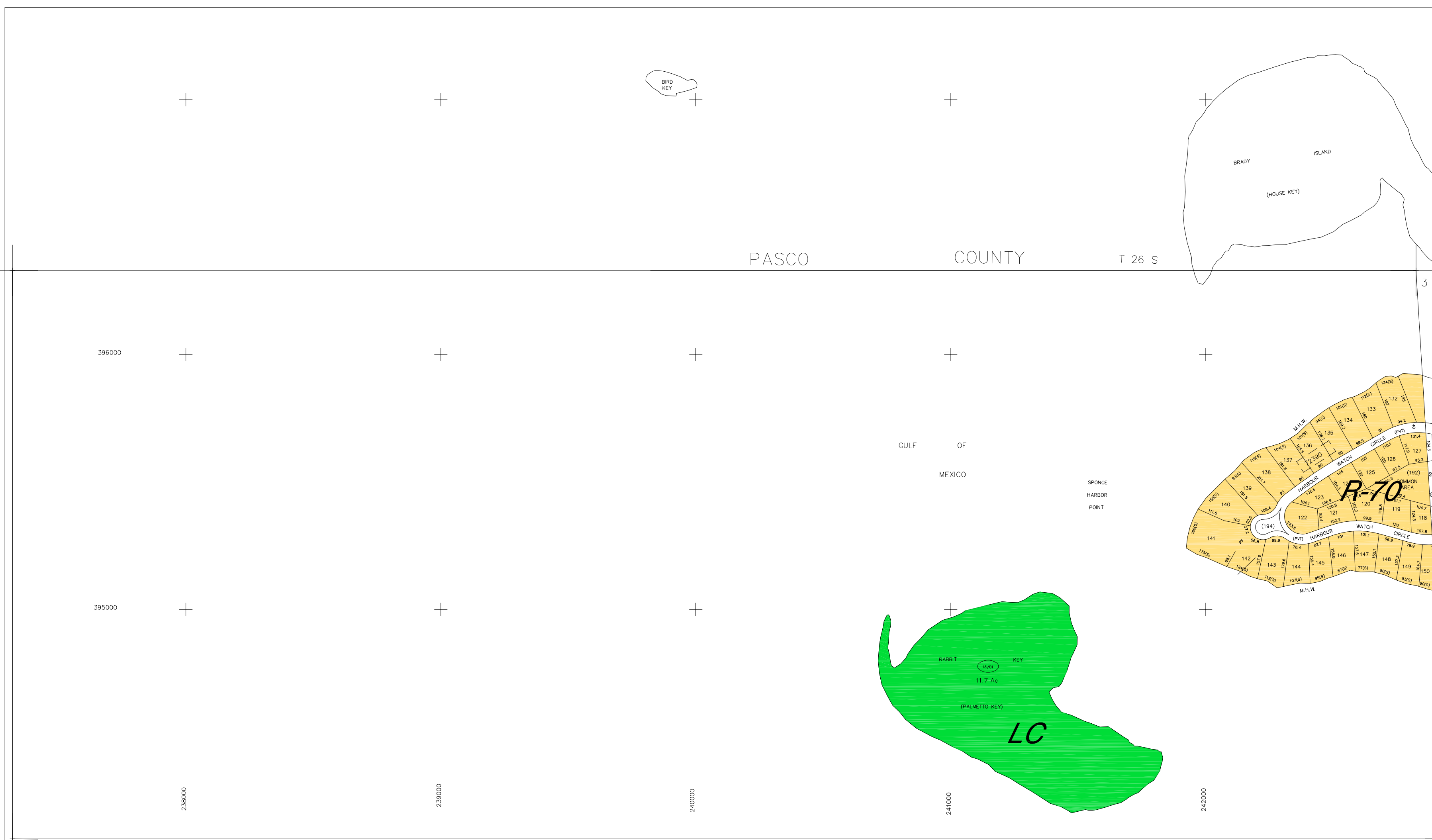
LEGEND

COUNTY LINE	---	AREA (FROM DEED)	10.5	Ac
CITY LIMIT LINE	---	AREA (CALCULATED)	10.5	Ac(c)
TAX DISTRICT LINE	---	DIMENSIONS (FROM DEED)	100.3	
ROAD R/W	==	DIMENSIONS (SCALED)	100(3)	
RAILROAD R/W	==	WATER		
SUB LINE	---	INTERSTATE HIGHWAY	(275)	
PROPERTY LINE	---	U.S. HIGHWAY	(19)	
LAND HOOK	---	STATE HIGHWAY	(60)	
INTERIOR TRACT LINE OR ORIGINAL LOT LINE	---	COUNTY HIGHWAY	(1)	
SUB LOT NUMBERS	(# & #)	ROADS OR STREETS	BY NAME	
PARCEL NUMBER	(# & #)	MAJOR TRANSMISSION LINES	POWER GAS OR OIL	
BLOCK NUMBER	(#)			
STATE PLANE COORDINATES	375000 +	SECTION CORNERS	2   1 11   12	
CHURCHES, SCHOOLS, CEASE TRENDS, AIRPORTS, GOVERNMENT LANDS, ETC.	BY NAME	ASSIGNED M & B PINELLAS FARMS/GROVES GEO-LOCATOR (BLK FIELD)	200   100 300   400	
SUB NUMBER	(#)	OTHER ASSIGNED BLK/LOT DESIGNATOR	(3)	

REVISIONS

DATE	BY	CHANGES OR ADDITIONS
05/96	JD	EDGEMATCH
08/99	TS	UPDATE/MISC
03/01	ENTZ	RE-EDGEMATCH

SECTION N 1/2 04  
TOWN 27 SOUTH, RANGE 15 EAST  
MAP NUMBER  
N04-27-15



▲ SEE SPECIAL SETBACKS

NO.	NAME	PB/ PG
▲ 72390	POINTE ALEXIS NORTH PHASE III (03-27-15)	102/072

Produced by MEDIT V2.1, Copyright (c) 1991-1992, Pinellas County, FL, Property Appraiser. All Rights reserved.  
ATTENTION: Although this map file represents a significantly high degree of accuracy and completeness, it was prepared for use in property assessment. Information on this document may be an abridgement of an original of date (from an official plat/set records) depending on the digital functions of this office. This map file should not be relied on for any reason as an alternative to a qualified survey. Please consult a licensed professional land surveyor in any matter involving property boundaries or rights of way.