

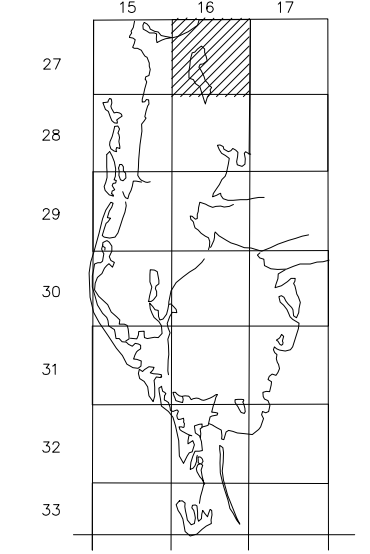
PROPERTY OWNERSHIP MAP  
PINELLAS COUNTY

PAM DUBOV  
PROPERTY APPRAISER

SCALE 1" = 300'  
DATE OF MAP: 08/14/90



COUNTY LOCATOR



SHEET MATCH

S01-27-15	S06-27-16	S05-27-16
N12-27-15	N07-27-16	N08-27-16
S12-27-15	S07-27-16	S08-27-16

LEGEND

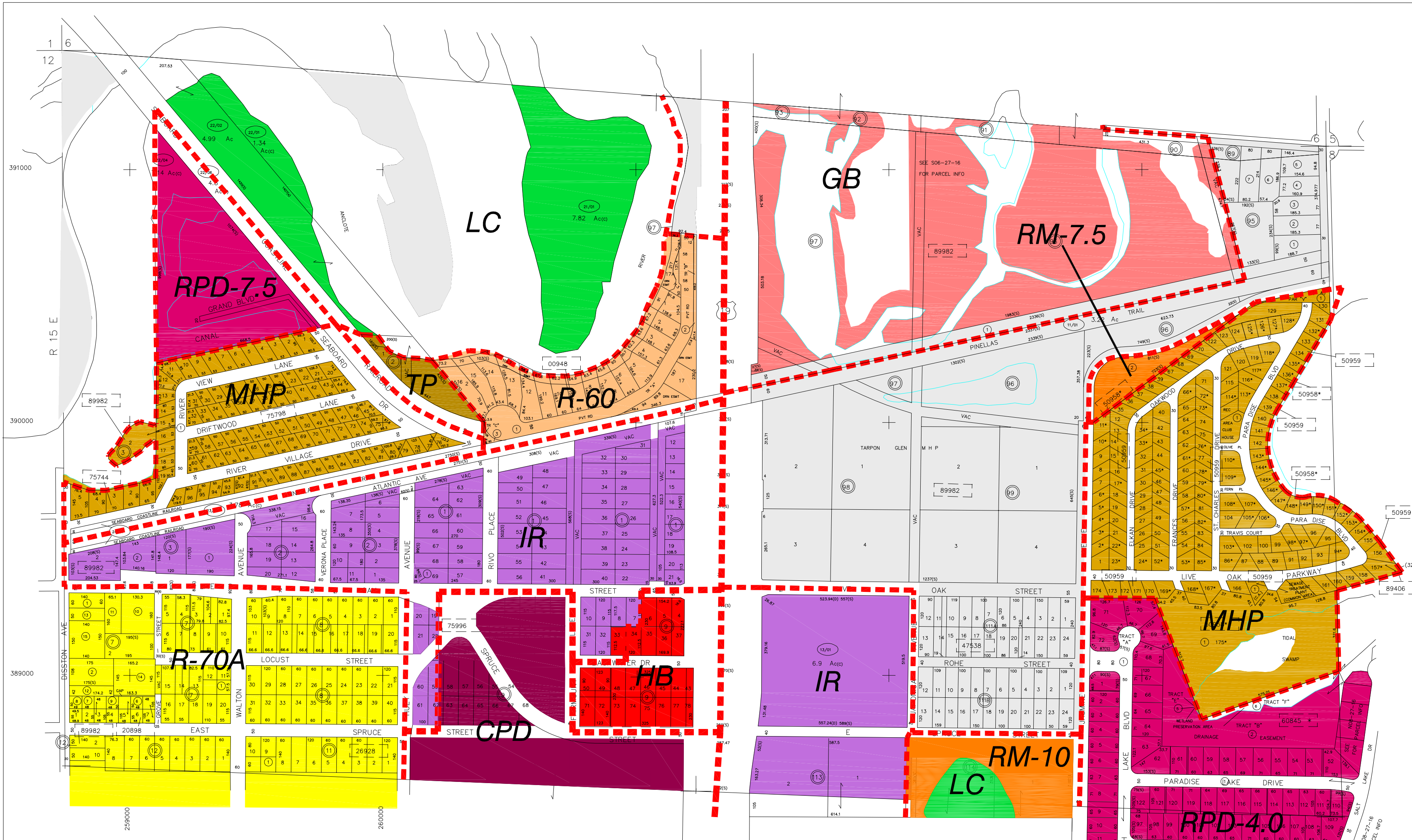
COUNTY LINE	---	AREA (FROM DEED)	10.5 Ac
CITY LIMIT LINE	---	AREA (CALCULATED)	10.5 Ac(c)
TAX DISTRICT LINE	---	DIMENSIONS (FROM DEED)	100.3
ROAD R/W	---	DIMENSIONS (SCALED)	1000.3
RAILROAD R/W	---	WATER	
SUB LINE	---	INTERSTATE HIGHWAY	
PROPERTY LINE	---	U.S. HIGHWAY	
LAND HOOK	---	STATE HIGHWAY	
INTERIOR TRACT LINE OR ORIGINAL LOT LINE	---	COUNTY HIGHWAY	
SUB LOT NUMBERS	31	ROADS OR STREETS	BY NAME
PARCEL NUMBER (M & B)	00/00	MAJOR TRANSMISSION LINES	POWER GAS OR OIL
BLOCK NUMBER	0	SECTION CORNERS	2 1 11 12
STATE PLANE COORDINATES	375000	ASSIGNED M & B	200 100 300 400
CHURCHES, SCHOOLS, CEMETERIES, AIRPORTS, GOVERNMENT LANDS, ETC.	BY NAME	PINELLAS FARMS/GROVES GEO-LOCATOR (BLK FIELD)	
SUB NUMBER		OTHER ASSIGNED BLK/LOT DESIGNATOR	(3)
SUB PARCEL NO.			

REVISIONS

DATE	BY	CHANGES OR ADDITIONS
11/01	SAW	UPDATE/SPLIT/COMB
01/02	SAW	UPDATE/SPLIT/MISC CORR
06/01	SAW	UPDATE/COMB
07/01	MW	UPDATE/MISC
03/96	JD/PE	REDO COOR./REDRAFT SECTION
03/06	AM	SAL HARBOR GROVES LEISURE LAKES VILLAGE
04/06	AM	

SECTION N 1/2 07  
TOWN 27 SOUTH, RANGE 16 EAST

N07-27-16  
MAP NUMBER



NOTE: ALL LOTS WITH \* ARE CARRIED IN SUB # 50958.

- \* SEE PLAT FOR DIMENSIONS
- ▲ SEE SPECIAL SETBACKS

NO.	NAME	PB/ PG	NO.	NAME	PB/ PG
00948	ANCLOTE BEND	133/072	89982	TARPON SPRINGS OFFICIAL MAP (12-27-15)	D-8/G/800
20898	DENNY'S M. E. SUB	19/054			
26928	FAIRMOUNT PARK	14/071			
47538	LAKE BUTLER VILLA CO'S SUB	H6/021			
▲ * 50958	LEISURE LAKE VILLAGE	54/034			
* 50959	LEISURE LAKE VILLAGE CONDO COMMON AREA	93/025 102/017			
▲ * 60845	NORTH LAKE OF TARPON SPRINGS - PHASE 1	119/040			
75744	RIVER BEND	55/003			
75798	RIVER VILLAGE	51/050			
75996	RIVO ALTO	17/002			
89406	TAMPA & TARPON SPRINGS LAND CO. (08-27-16)	H1/116			

Produced by MDT 10.1, Copyright (c) 1991-1993, Pinellas County, FL, Property Appraiser. All Rights Reserved.  
ATTENTION: ALTHOUGH THIS MAP FILE REPRESENTS A SIGNIFICANTLY HIGH DEGREE OF ACCURACY AND COMPLETENESS, IT IS NOT A GUARANTEE OF ACCURACY. THE PROPERTY APPRAISER'S OFFICE DOES NOT WARRANT THE ACCURACY OF THE DATA SET OR THE DATA FROM AN OFFICIAL, UNLESS SPECIFICALLY STATED IN THIS DOCUMENT. THE PROPERTY APPRAISER'S OFFICE DOES NOT BE RESPONSIBLE FOR ANY LOSS OF DATA OR FOR ANY DAMAGE TO PROPERTY OR RIGHTS OF ANY KIND, INCLUDING PROFESSIONAL LAND SURVEYOR IN ANY MATTER INVOLVING PROPERTY BOUNDARIES OR RIGHTS OF WAY.