

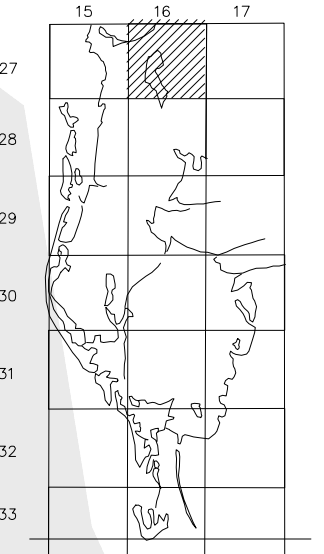
PROPERTY OWNERSHIP MAP  
PINELLAS COUNTY

PAM DUBOV  
PROPERTY APPRAISER

SCALE 1" = 300'  
DATE OF MAP: 08/30/88



COUNTY LOCATOR



SHEET MATCH

N07-27-16	N08-27-16	N09-27-16
S07-27-16	S08-27-16	S09-27-16
N18-27-16	N17-27-16	N16-27-16

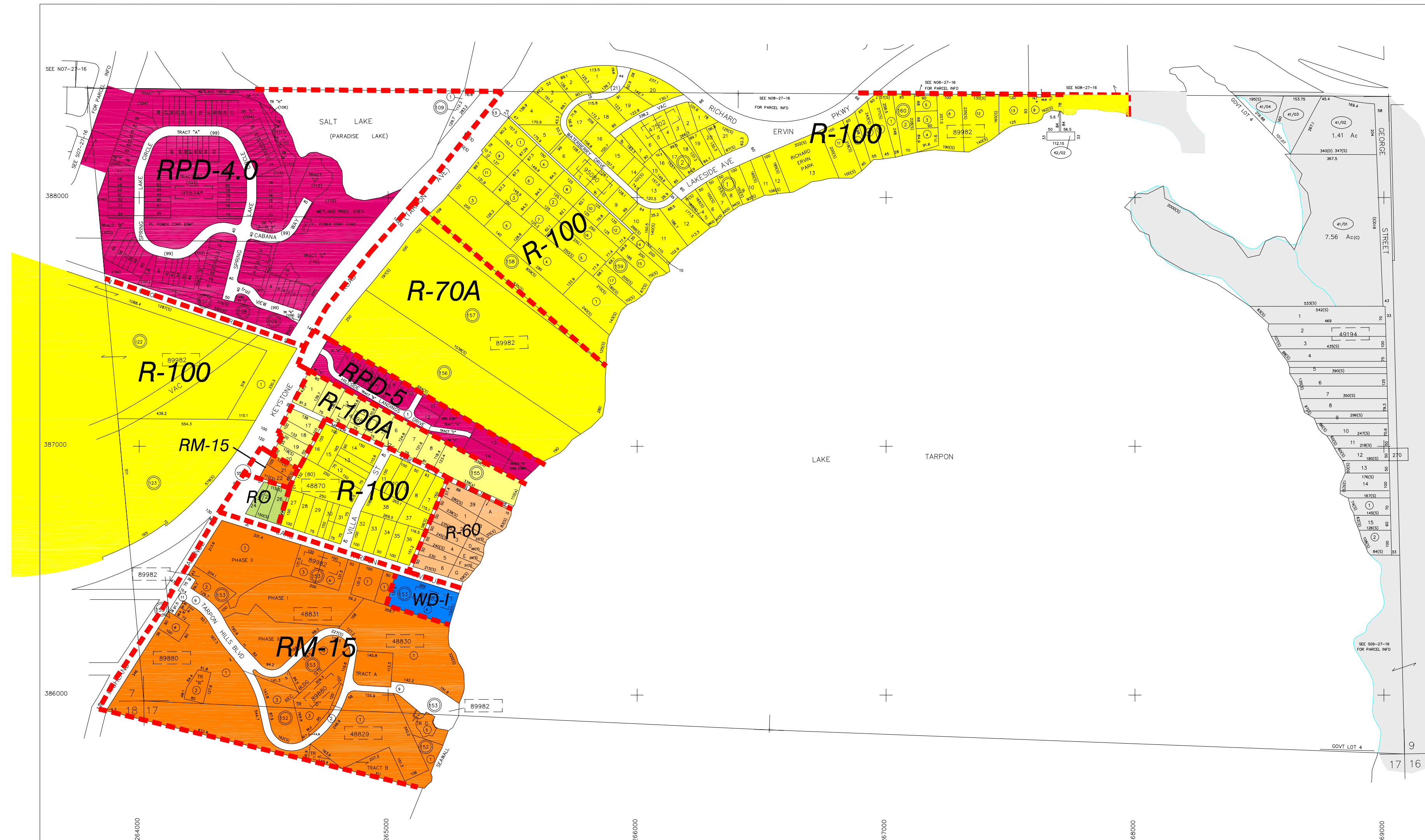
LEGEND

COUNTY LINE	---	AREA (FROM DEED)	10.5 Ac
CITY LIMIT LINE	---	AREA (CALCULATED)	10.5 Ac(c)
TAX DISTRICT LINE	---	DIMENSIONS (FROM DEED)	100.3
ROAD R/W	---	DIMENSIONS (SCALED)	10003
RAILROAD R/W	---	WATER	
SUB LINE	---	INTERSTATE HIGHWAY	(275)
PROPERTY LINE	---	U.S. HIGHWAY	(19)
LAND HOOK	---	STATE HIGHWAY	(60)
INTERIOR TRACT LINE OR ORIGINAL LOT LINE	---	COUNTY HIGHWAY	(1)
SUB LOT NUMBERS	31	ROADS OR STREETS	BY NAME
PARCEL NUMBER (W & B)	(99/00)	MAJOR TRANSMISSION LINES	POWER GAS OR OIL
BLOCK NUMBER	(2)	SECTION CORNERS	2   1 11   12
STATE PLANE COORDINATES	375000 + 275000	ASSIGNED M & B PINELLAS FARMS/GROVES GEO-LOCATOR (BLK FIELD)	200 100 300 400
CHURCHES, SCHOOLS, CEMETRIES, AIRPORTS, GOVERNMENT LANDS ETC.	BY NAME	OTHER ASSIGNED BLK/LOT DESIGNATOR	(3)

REVISIONS

DATE	BY	CHANGES OR ADDITIONS
11/05	TES	UPDATE/SPLIT
04/05	CG	UPDATE/APPEND SUB (74398)
04/06	SAW	APPEND SUB (40004)
05/05	cg	UPDATE/split/comb
11/95	JD	REDO COORD/RE-DRAFT SECTION
08/05	AM	REZONED FROM RM-5RM-15 TO R-60

SECTION S 1/2 08  
TOWN 27 SOUTH, RANGE 16 EAST  
S08-27-16  
MAP NUMBER



NO.	NAME	PB/ PG	NO.	NAME	PB/ PG
* 40004	HILLSIDE LANDINGS	132/017	89982	TARPON SPRINGS OFFICIAL MAP (12-27-15)	G/800
47502	LAKE BUTLER ESTATES	14/042		▲ TOWNHOMES AT NORTH LAKE	123/083
48829	LAKE TARPON SAIL AND TENNIS CLUB I CONDO	22/084	* 91534	▲ WATERBERRY A PRIVATE LAND RESERVE	95/005
48830	LAKE TARPON SAIL AND TENNIS CLUB II CONDO	42/104	▲ 95080		
48831	LAKE TARPON SAIL AND TENNIS CLUB III CONDO				
	PHASE I	70/107			
	PHASE II	84/001			
48870	LAKE VIEW	05/076			
49194	LAKE VISTA	24/001			
74398	RESTORATION	129/043			
89880	TARPON HIGHLANDS LK TARPON SAIL TENNIS CLUB I CONDO	124/029			

Produced by MDT V2.1, Copyright (c) 1991-1992, Pinellas County, FL, Property Appraiser. All Rights reserved.  
ATTENTION: ALTHOUGH THIS MAP FILE REPRESENTS A SIGNIFICANTLY HIGH DEGREE OF ACCURACY AND COMPLETENESS, IT WAS PREPARED FOR USE IN PROPERTY ACQUISITION. INFORMATION IN THE DOCUMENT MAY BE AN OUTDATE OF 90 DAYS OUT OF DATE FROM AN OPTION. PLAYERS RECORDING DEPENDS ON THE CIRCUMSTANCES OF THIS OFFICE. THIS MAP FILE SHOULD NOT BE RELIED ON FOR ANY PURPOSE AS AN ALTERNATIVE TO A QUALIFIED SURVEY. PLEASE CONSULT A LICENSED PROFESSIONAL LAND SURVEYOR IN ANY MATTER INVOLVING PROPERTY BOUNDARIES OR RIGHTS OF WAY.