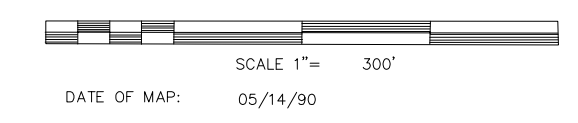
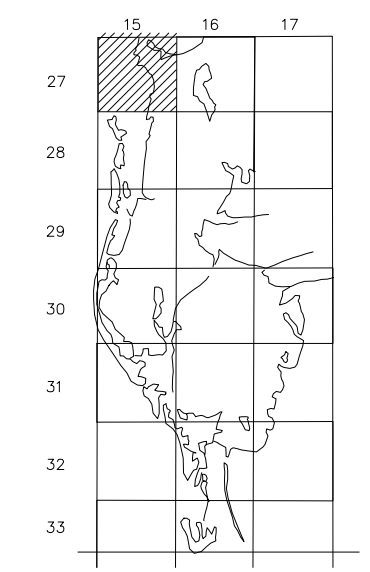


PROPERTY OWNERSHIP MAP
PINELLAS COUNTY

PAM DUBOV
PROPERTY APPRAISER



COUNTY LOCATOR



SHEET MATCH

GULF OF MEXICO	S04-27-15	S03-27-15
N08-27-15	N09-27-15	N10-27-15
S08-27-15	ST. JOSEPH SOUND	S10-27-15

LEGEND

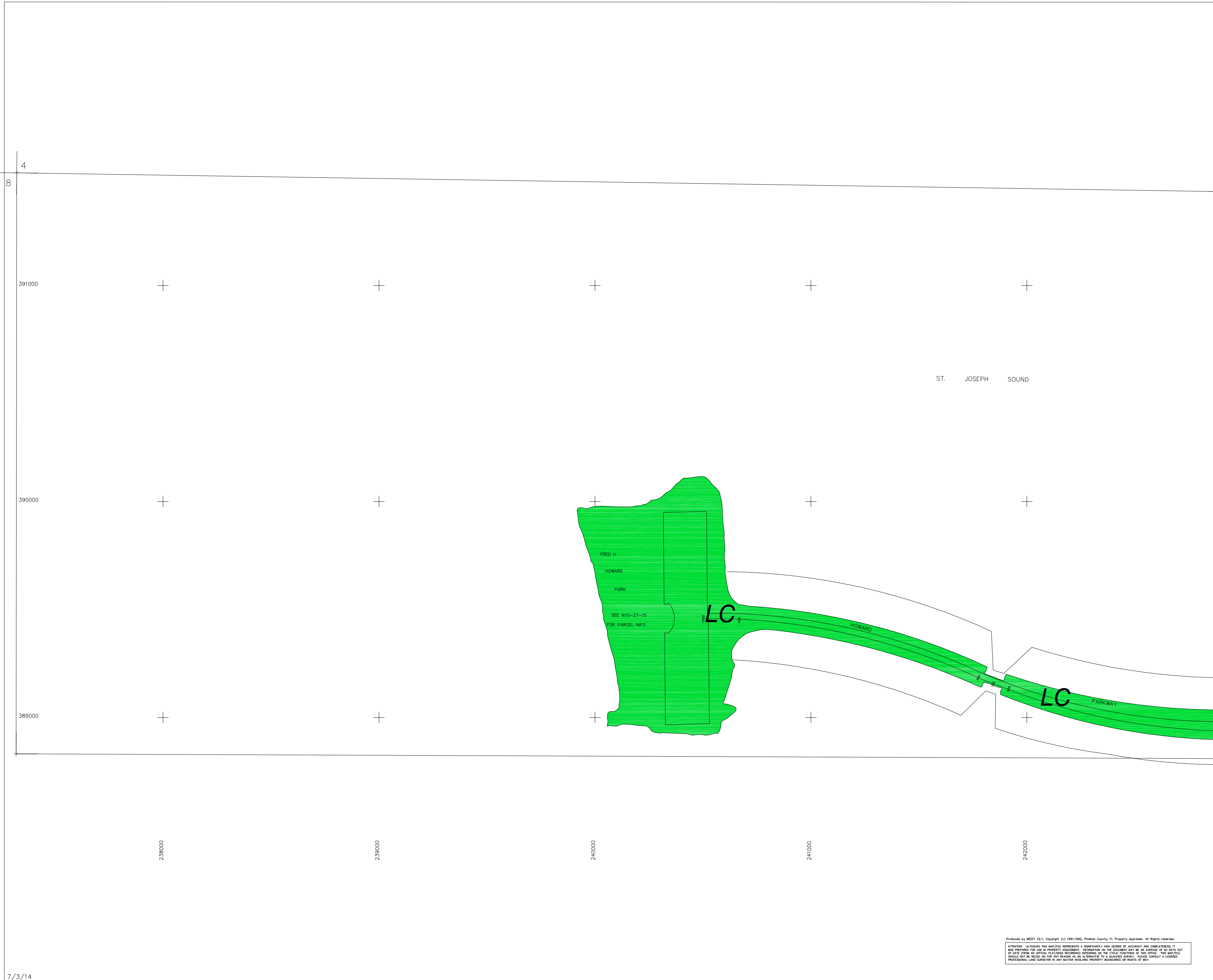
COUNTY LINE	---	AREA (FROM DEED)	10.5	Ac
CITY LIMIT LINE	---	AREA (CALCULATED)	10.5	Ac(0)
TAX DISTRICT LINE	---	DIMENSIONS (FROM DEED)	100.3	
ROAD R/W	---	DIMENSIONS (SCALED)	100(X)	
RAILROAD R/W	---	WATER		
SUB LINE	---	INTERSTATE HIGHWAY		(275)
PROPERTY LINE	---	U.S. HIGHWAY		(19)
LAND HOOK	---	STATE HIGHWAY		(60)
INTERIOR TRACT LINE OR ORIGINAL LOT LINE	---	COUNTY HIGHWAY		(1)
SUB LOT NUMBERS	---	ROADS OR STREETS	BY NAME	
PARCEL NUMBER (N & W)	(N & W)	MAJOR TRANSMISSION LINES	POWER	
BLOCK NUMBER	(2)		GAS OR OIL	
STATE PLANE COORDINATES	375000	SECTION CORNERS	2	1
	275000		11	12
CHURCHES, SCHOOLS, CEMETERIES, AIRPORTS, GOVERNMENT LANDS, ETC.	BY NAME	ASSIGNED M & B PINELLAS FARMS/GROVES GEO-LOCATOR (BLK FIELD)	200	100
			300	400
SUB NUMBER	(1)	OTHER ASSIGNED BLK/LOT DESIGNATOR		(3)

REVISIONS

DATE	BY	CHANGES OR ADDITIONS
05/26/00	JD	REDO COORDS/EDGEMATCH
08/29/09	TS	UPDATE/MISC

SECTION N1/209
TOWN 27 SOUTH, RANGE 15 EAST

N09-27-15
MAP NUMBER



Produced by MDT V2.1, Copyright (c) 1991-1992, Pinellas County, FL Property Appraiser. All Rights reserved.
ATTENTION: ALTHOUGH THIS MAP FILE REPRESENTS A SIGNIFICANTLY HIGH DEGREE OF ACCURACY AND COMPLETENESS, IT WAS PREPARED FOR USE IN PROPERTY ASSESSMENT. INFORMATION ON THE ACCURACY OF THE DATA OR OF DATA ORIGIN OR ON OFFICIAL PLAT/DEED RECORDING DEPENDS ON THE CULIC FACTORS OF THE OFFICE. THIS MAP FILE SHOULD NOT BE RELIED ON FOR ANY REASON AS AN ALTERNATIVE TO A QUALIFIED SURVEY. PLEASE CONSULT A LICENSED PROFESSIONAL LAND SURVEYOR IN ANY MATTER INVOLVING PROPERTY BOUNDARIES OR RIGHTS OF WAY.