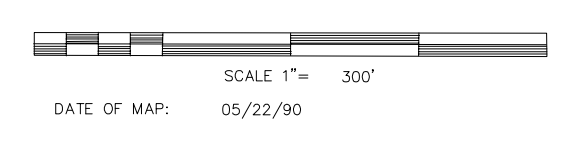
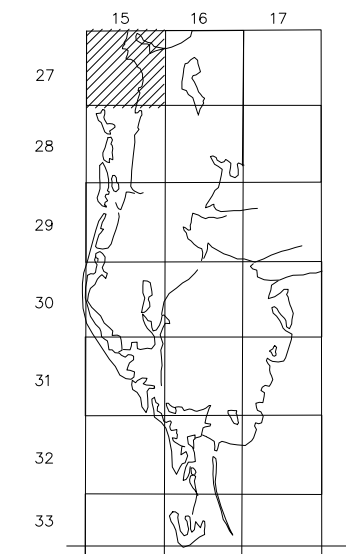


PROPERTY OWNERSHIP MAP
PINELLAS COUNTY

PAM DUBOV
PROPERTY APPRAISER



COUNTY LOCATOR



SHEET MATCH

S03-27-15	S02-27-15	S01-27-15
N10-27-15	N11-27-15	N12-27-15
S10-27-15	S11-27-15	S12-27-15

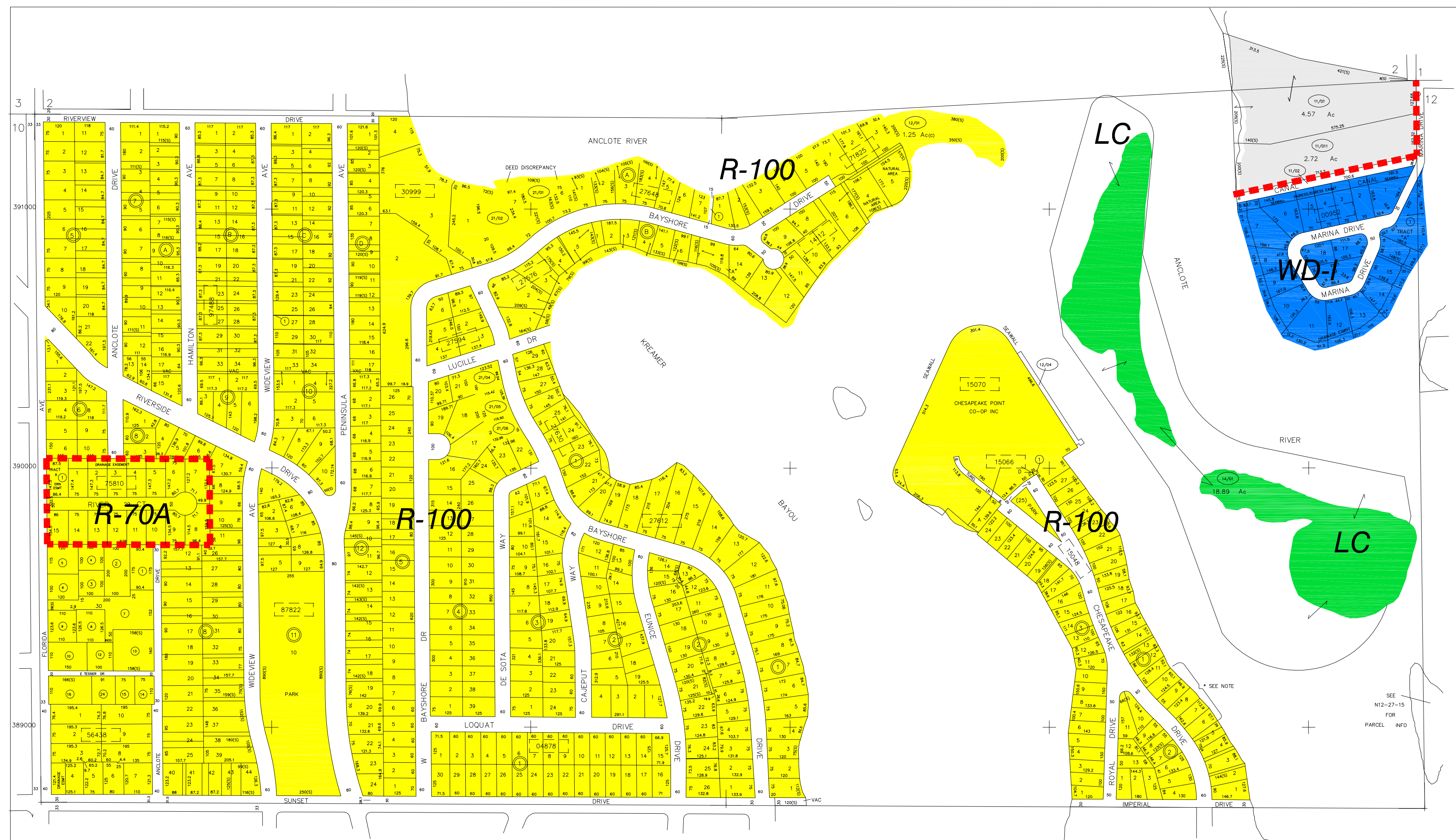
LEGEND

COUNTY LINE	---	AREA (FROM DEED)	10.5 Ac
CITY LIMIT LINE	---	AREA (CALCULATED)	10.5 AC(10)
TAX DISTRICT LINE	---	DIMENSIONS (FROM DEED)	100.3
ROAD R/W	==	DIMENSIONS (SCALED)	100(5)
RAILROAD R/W	==	WATER	
SUB LINE	---	INTERSTATE HIGHWAY	(275)
PROPERTY LINE	---	U.S. HIGHWAY	(19)
LAND HOOK	---	STATE HIGHWAY	(60)
INTERIOR TRACT LINE OR ORIGINAL LOT LINE	---	COUNTY HIGHWAY	(1)
SUB LOT NUMBERS	31	ROADS OR STREETS	BY NAME
PARCEL NUMBER (M & B)	(00/00)	MAJOR TRANSMISSION LINES	POWER GAS OR OIL
BLOCK NUMBER	(2)		
STATE PLANE COORDINATES	375000 +	SECTION CORNERS	2 1 11 12
CHURCHES, SCHOOLS, CENTERS, AIRPORTS, GOVERNMENT LANDS ETC.	BY NAME	ASSIGNED M & B PINELLAS FARMS/ROVES GEO-LOCATOR (BLK FIELD)	300 100 300 400
SUB NUMBER	()	OTHER ASSIGNED BLK/LOT DESIGNATOR	(3)

REVISIONS

DATE	BY	CHANGES OR ADDITIONS
12/05	TES	UPDATE/COMB
04/04	KW	UPDATE/SPLIT
06/04	CG	UPDATE/SPLIT/COMB
10/05	CG	UPDATE/APPEND (15070)
12/06	JD	REDO COORD/RETRACT SECTION
05/05	AM	ORD. 2003 - 32

SECTION N 1/2 11
TOWN 27 SOUTH, RANGE 15 EAST
MAP NUMBER N11-27-15



NOTE: SUB 15048 BLK 1 LOTS 6-10 WATERSE DMS CHANGED BY 1962 COURT ORDER 1422/331 89208

▲ SEE SPECIAL SETBACKS
NOTE: SUB # DOES NOT FOLLOW STANDARDIZED PARCEL FORMAT LOT FIELD HAS BEEN SHIFTED TO LEFT 1 SPACE BLK FIELD HAS BEEN SHIFTED TO LEFT 2 SPACES

NO.	NAME	PB/ PG	NO.	NAME	PB/ PG
00952	ANCLOTE ISLES	113/071	▲ 75810	RIVERSIDE ESTATES	134/096
04878	BAYSHORE HEIGHTS	50/061	87822	SUNSET HILLS 2ND ADD (10-27-15)	17/041
14112	CASA MIA UNIT NO. 1	55/046	89208	TAMPA & TARPON SPRINGS LAND CO	HI/116
15048	CHESAPEAKE POINT	14/021	97488	WIDEVIEW	16/040
15066	CHESAPEAKE POINT NO. 2	24/032			
15070	CHESAPEAKE POINT CO-OP INC (SEE O.R. 14356/388-395)	UNREC			
27576	FERGUSON'S CEDAR BLUFFS	38/046			
27594	FERGUSON'S CEDAR BLUFFS ADD	46/054			
27612	FERGUSON'S ESTATES	32/015			
27630	FERGUSON'S ESTATES REPLAT	38/069			
27648	FERGUSON, RUSH	35/088			
30999	GLENDI COVE SUBDIVISION	121/076			
56438	MAYFAIR VILLAS AT HOWARD PARK	123/033			
71825	PIONEER POINT	106/004			

Produced by MDTI V2.1, Copyright (c) 1991-1992, Pinellas County, FL Property Appraiser. All Rights reserved.
ATTENTION: ALTHOUGH THIS MAP/PDF REPRESENTS A SIGNIFICANT HIGH DEGREE OF ACCURACY AND COMPLETENESS, IT WAS PREPARED FOR USE IN PROPERTY ACQUISITION. INFORMATION ON THE DOCUMENT MAY BE AN INDICATOR OF DISCREPANCY OR DATE FROM AN OFFICIAL PLAT/RECORDING DEPARTMENT ON THE DATE OF THIS OFFICE. THIS MAP/PDF SHOULD NOT BE RELIED ON FOR ANY RECORDS AS AN INDICATOR OF A QUALIFIED SURVEY. PLEASE CONSULT A LICENSED PROFESSIONAL LAND SURVEYOR AND WATER BOUNDARY BOUNDARIES OF RECORDS OF MAP.