

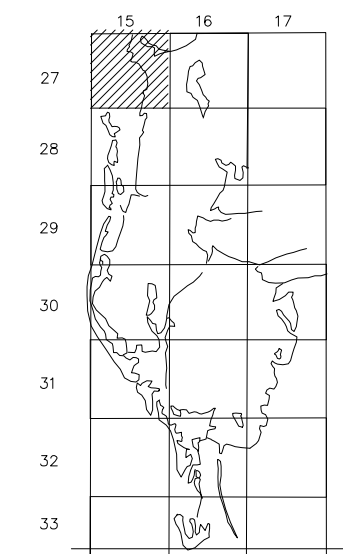
PROPERTY OWNERSHIP MAP
PINELLAS COUNTY

PAM DUBOV
PROPERTY APPRAISER

SCALE 1" = 300'
DATE OF MAP: 06/14/90



COUNTY LOCATOR



SHEET MATCH

N14-27-15	N13-27-15	N18-27-16
S14-27-15	S13-27-15	S18-27-16
N23-27-15	N24-27-15	N19-27-16

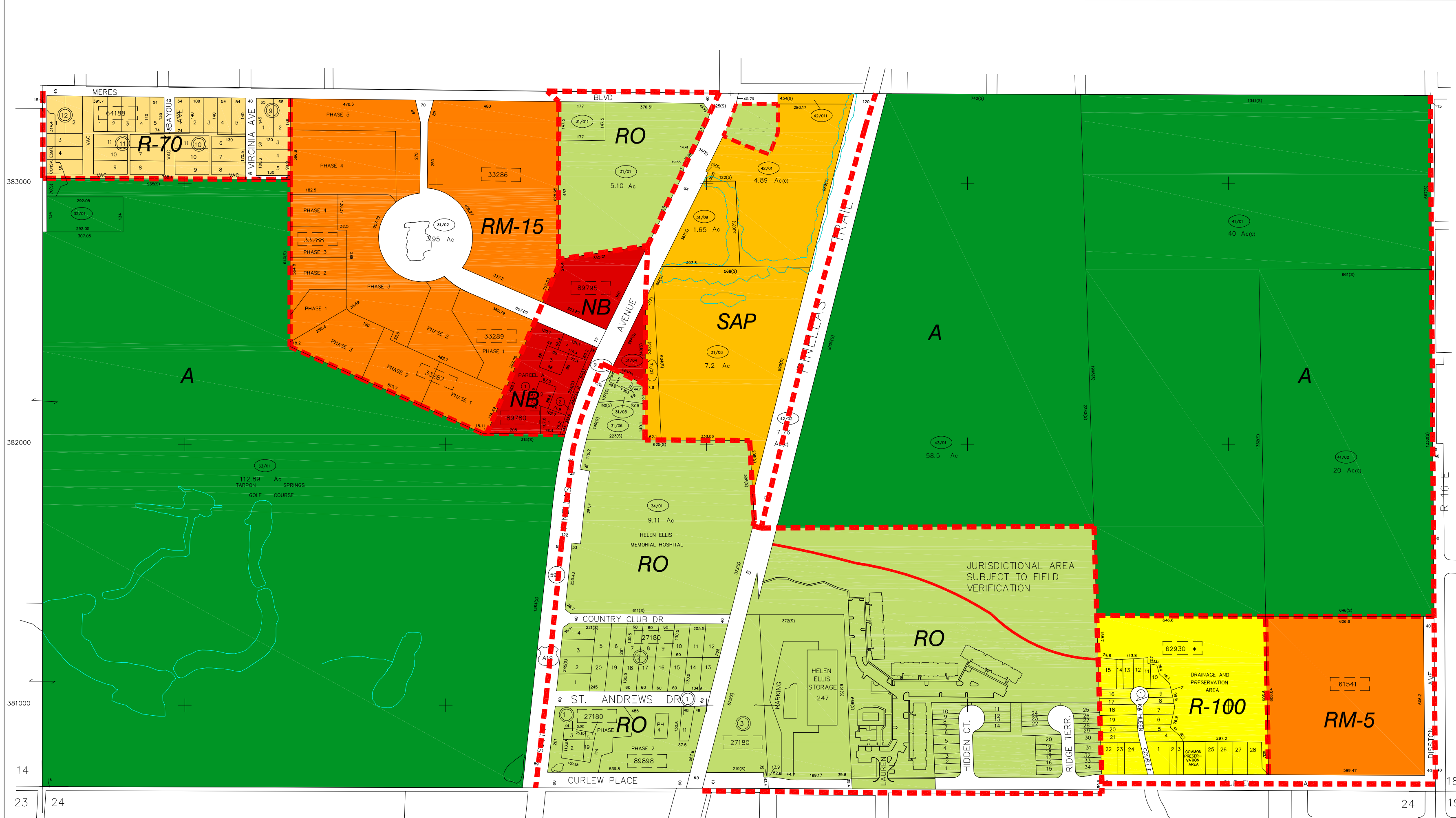
LEGEND

COUNTY LINE	---	AREA (FROM DEED)	10.5 Ac
CITY LIMIT LINE	---	AREA (CALCULATED)	10.5 Ac(c)
TAX DISTRICT LINE	---	DIMENSIONS (FROM DEED)	100.3
ROAD R/W	---	DIMENSIONS (SCALED)	10003
RAILROAD R/W	---	WATER	
SUB LINE	---	INTERSTATE HIGHWAY	75
PROPERTY LINE	---	U.S. HIGHWAY	19
LAND HOOK	---	STATE HIGHWAY	60
INTERIOR TRACT LINE OR ORIGINAL LOT LINE	---	COUNTY HIGHWAY	1
SUB LOT NUMBERS	---	ROADS OR STREETS	BY NAME
PARCEL NUMBER (N & S)	---	MAJOR TRANSMISSION LINES	POWER GAS OR OIL
BLOCK NUMBER	---	SECTION CORNERS	2 1 11 12
STATE PLANE COORDINATES	---	CHURCHES, SCHOOLS, CEMETRIES, AIRPORTS, GOVERNMENT LANDS, ETC.	BY NAME
SUB NUMBER	---	ASSIGNED M & B PINELLAS FARMS/GROVES GEO-LOCATOR (BLK FIELD)	200 100 300 400
SUB PARCEL NO.	---	OTHER ASSIGNED BLK/LOT DESIGNATOR	(3)

REVISIONS

DATE	BY	CHANGES OR ADDITIONS
01/02	SAW	UPDATE/ROAD TAKE
02/99	TS	UPDATE/MISC
02/00	MW	UPDATE/MISC
12/00	kpy	update/comb
08/96	JD	REDO COORD/REDRAFT SECTION
08/05	AM	HIDDEN RIDGE TOWNHOMES

SECTION S1/213
TOWN 27 SOUTH, RANGE 15 EAST
S13-27-15
MAP NUMBER



NO.	NAME	PB	PG	NO.	NAME	PB	PG
27180	FAIRWAY SUB	09/102		62930	OAKLEAF CLUSTER HOMES	93/032	
33286	GREEN DOLPHIN PARK CONDO	37/042		64188	ORANGE HEIGHTS	03/033	
33287	GREEN DOLPHIN PARK MID-RISE CONDO	66/078			* BLKS 1 TO 12 IN TARPON SPRINGS		
33288	GREEN DOLPHIN PARK GOLFVIEW HOMES CONDO			89780	TARPON BEND PROFESSIONAL CENTER	109/055	
	PHASE 1	97/014		89795	TARPON GARDENS PROFESSIONAL OFFICES CONDO	62/034	
	PHASE 2	101/040					
	PHASE 3,4	104/091		89898	TARPON MEDICAL AND PROFESSIONAL CENTER CONDO		
33289	GREEN DOLPHIN PARK VILLAS CONDO	59/001			PHASE 1	68/057	
	PHASE 3	69/093			PHASE 4	72/114	
	PHASE 4	73/056			PHASE 2	99/035	
61541	NORTH VILLAGE CONDO	93/006			HIDDEN RIDGE TOWNHOMES	129/071	

Produced by MDT V23, Copyright (c) 1991-1992, Pinellas County, FL Property Appraiser. All Rights Reserved.
ATTENTION: ALTHOUGH THIS MAP/PDF REPRESENTS A SUBSTANTIALLY HIGH DEGREE OF ACCURACY AND COMPLETENESS, IT IS NOT GUARANTEED FOR USE IN PROPERTY ACQUISITION. INFORMATION ON THE ACCURACY MAY BE AN INDICATOR OF THE QUALITY OF THE DATA. IT SHOULD NOT BE RELIED ON FOR ANY DECISION OF AN ALTERNATIVE TO A QUALIFIED SURVEYOR. PLEASE CONSULT A LICENSED PROFESSIONAL LAND SURVEYOR IN ANY MATTER INVOLVING PROPERTY BOUNDARIES OR RIGHTS OF WAY.