

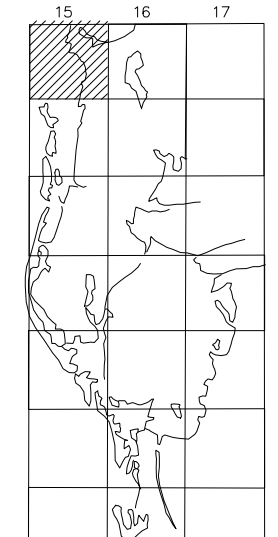
PROPERTY OWNERSHIP MAP
PINELLAS COUNTY

PAM DUBOV
PROPERTY APPRAISER

SCALE 1" = 300'
DATE OF MAP: 08/14/90



COUNTY LOCATOR



SHEET MATCH

S10-27-15	S11-27-15	S12-27-15
N15-27-15	N14-27-15	N13-27-15
S15-27-15	S14-27-15	S13-27-15

LEGEND

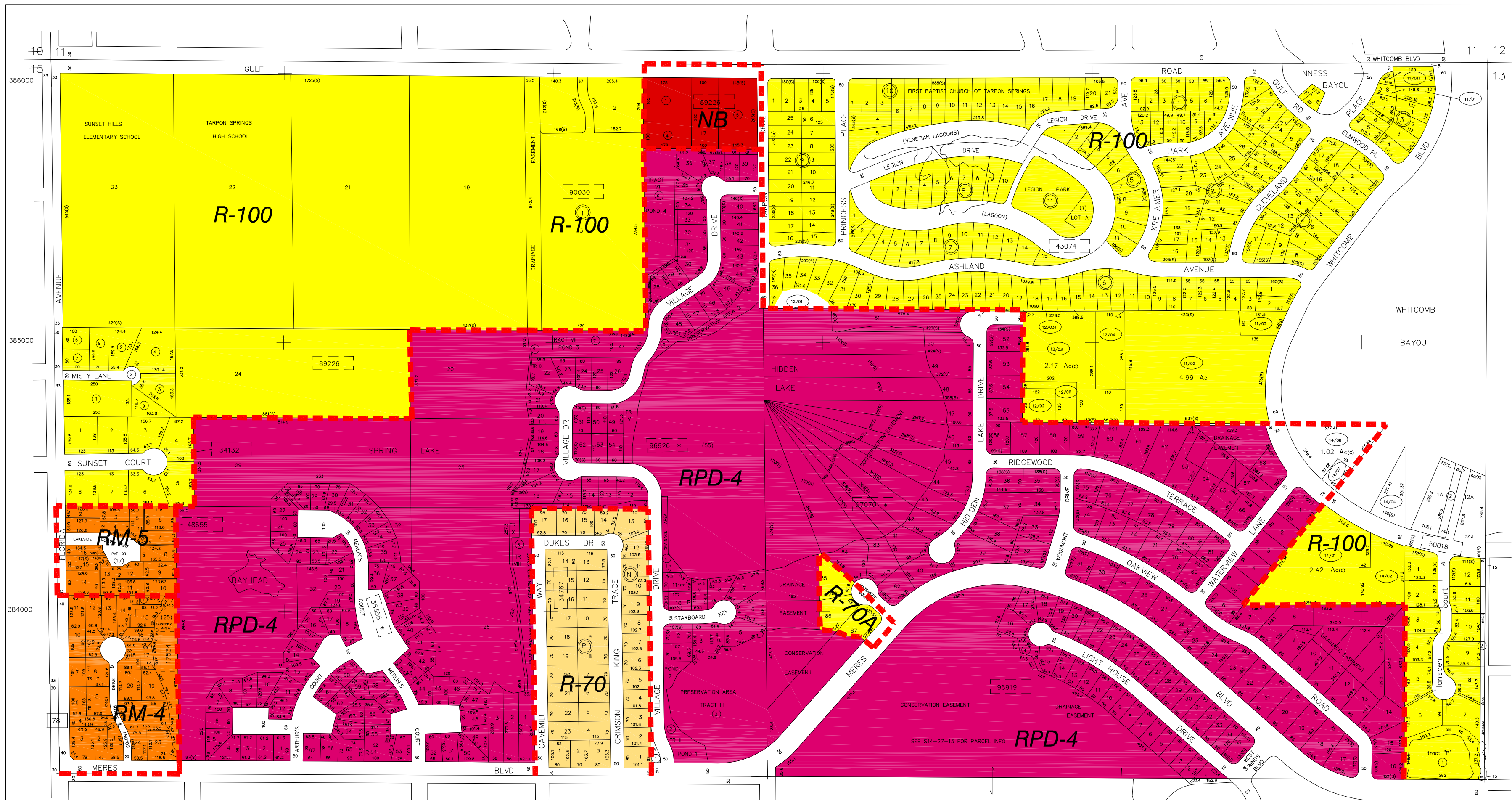
COUNTY LINE	---	AREA (FROM DEED)	10.5 Ac
CITY LIMIT LINE	---	AREA (CALCULATED)	10.5 Ac(c)
TAX DISTRICT LINE	---	DIMENSIONS (FROM DEED)	100.5
ROAD R/W	---	DIMENSIONS (SCALED)	100(5)
RAILROAD R/W	---	WATER	
SUB LINE	---	INTERSTATE HIGHWAY	275
PROPERTY LINE	---	U.S. HIGHWAY	19
LAND HOOK	---	STATE HIGHWAY	60
INTERIOR TRACT LINE OR ORIGINAL LOT LINE	---	COUNTY HIGHWAY	1
SUB LOT NUMBERS	31	ROADS OR STREETS	BY NAME
PARCEL NUMBER (w & b)	00/00	MAJOR TRANSMISSION LINES	POWER GAS OR OIL
BLOCK NUMBER	2		
STATE PLANE COORDINATES	375000	SECTION CORNERS	2 1 11 12
CHURCHES, SCHOOLS, CENTERS, AIRPORTS, GOVERNMENT LANDS ETC.	BY NAME	ASSIGNED M & B PINELLAS FARMS (BLK FIELD) GEO-LOCATOR (BLK FIELD)	200 100 300 400
SUB NUMBER		OTHER ASSIGNED BLK./LOT DESIGNATOR	(3)

REVISIONS

DATE	BY	CHANGES OR ADDITIONS
01/01	PC	UPDATE/SPLITS & COMB
07/01	KW/TE	UPDATE/SPLIT
10/99	ENTZ	MISC REDRAFT/UPDATE
09/01	PC	REDO COORD/AMSC EDGE MATCH
07/96	JD	REDO COORD/REDRAFT SECTION
05/05	AM	SPRING LAKE ESTATES

SECTION N 1/2 14
TOWN 27 SOUTH, RANGE 15 EAST

N14-27-15
MAP NUMBER



SEE FLAT FOR DIMENSIONS
SEE SPECIAL SETBACKS

NO.	NAME	PB / PG
17534	COLONY SOUTH	100/088
34132	GULF CREST ESTATES	73/020
34767	GULFVIEW RIDGE	71/031
* 35355	HAMLETS AT WHITCOMB PLACE, THE	90/010
43074	INNESS PARK EXTENSION	14/061
48655	LAKESIDE COLONY	93/062
50018	LANSDEN COURT	122/007
89226	TAMPA & TARPON SPRINGS LAND CO.	HI/116
90030	TARPON VILLAGE SQUARE	108/084
▲ 96919	WESTWINDS PHASE I	108/036
* 96926	WESTWINDS VILLAGE	116/001
* 97070	WHITCOMB PLACE	104/071
▲ 84964	SPRING LAKE ESTATES	1264/077

Produced by MDT V2.1, Copyright (c) 1991,1992, Pinellas County, FL Property Appraiser. All Rights reserved.
ATTENTION: Although this map represents a substantial high degree of accuracy and completeness, it was prepared for use in property assessment. Information on this document may be an advance or in draft and should not be relied on for any reason as an instrument to a qualified surveyor. Please consult a licensed professional land surveyor or other qualified professional for details of any