

PROPERTY OWNERSHIP MAP  
PINELLAS COUNTY

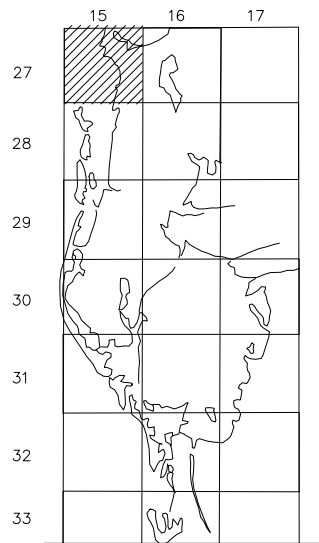
PAM DUBOV  
PROPERTY APPRAISER

SCALE 1" = 300'

DATE OF MAP: 06/15/90



COUNTY LOCATOR



SHEET MATCH

N23-27-15	N24-27-15	N19-27-16
S23-27-15	S24-27-15	S19-27-16
N26-27-15	N25-27-15	N30-27-16

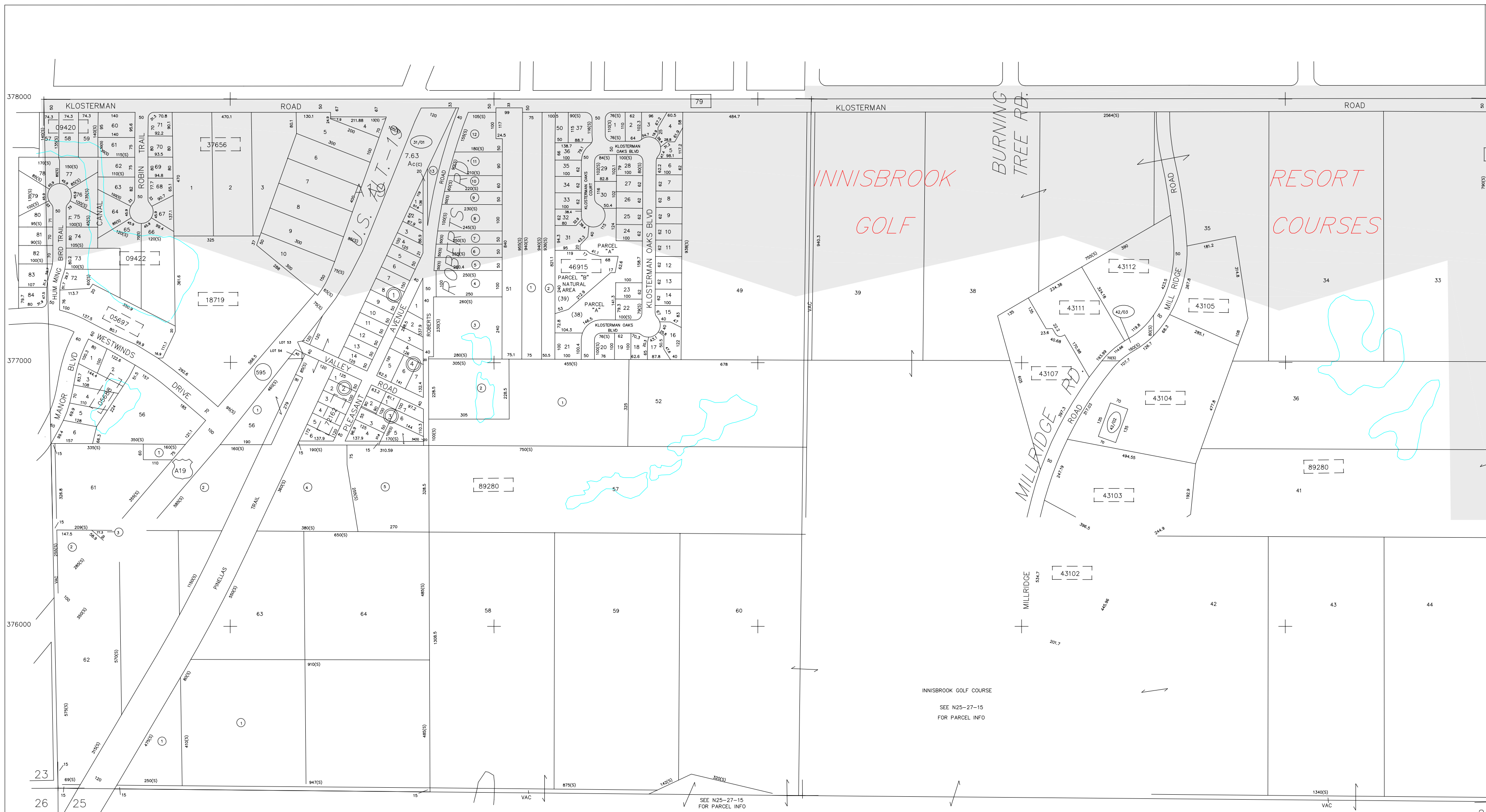
LEGEND

COUNTY LINE	---	AREA (FROM DEED)	10.5 Ac
CITY LIMIT LINE	---	AREA (CALCULATED)	10.5 Ac(c)
TAX DISTRICT LINE	---	DIMENSIONS (FROM DEED)	100.3
ROAD R/W	---	DIMENSIONS (SCALED)	100(5)
RAILROAD R/W	---	WATER	
SUB LINE	---	INTERSTATE HIGHWAY	(275)
PROPERTY LINE	---	U.S. HIGHWAY	(19)
LAND HOOK	---	STATE HIGHWAY	(60)
INTERIOR TRACT LINE OR ORIGINAL LOT LINE	---	COUNTY HIGHWAY	(1)
SUB LOT NUMBERS	31	ROADS OR STREETS	BY NAME
PARCEL NUMBER (w & #)	(9/90)	MAJOR TRANSMISSION LINES	---
BLOCK NUMBER	(2)		GAS OR OIL
STATE PLANE COORDINATES	375000 +	SECTION CORNERS	2   1 11   12
CHURCHES, SCHOOLS, CEMETERIES, AIRPORTS, GOVERNMENT LANDS ETC.	BY NAME	ASSIGNED M & B PINELLAS FARMS/GROVES GEO-LOCATOR (BLK FIELD)	200   100 300   400
SUB NUMBER	(1)	OTHER ASSIGNED BLK/LOT DESIGNATOR	(3)

REVISIONS

DATE	BY	CHANGES OR ADDITIONS
07/96	JD	REDO COORD/EDGEMATCH
05/93	MW	MISC. UPDATE
06/95	TE	REDRAFT SECTION
05/96	DLT	UPDATE/COMB
05/96	MC	MISC. UPDATE

SECTION S 1/2 24  
TOWN 27 SOUTH, RANGE 15 EAST  
S24-27-15  
MAP NUMBER



NO.	NAME	PB/ PG	NO.	NAME	PB/ PG
05688	BAYWOOD MANOR SUB (23-27-15)	47/068	43107	INNISBROOK NO. 25-C CONDO	50/072
05697	BAYWOOD ON THE GULF NO. 1 CONDO	02/103	43111	INNISBROOK NO. 26 CONDO	43/035, 50/073
09420	BLUE JAY WOODLANDS PHASE 1 (23-27-15)	79/042	43112	INNISBROOK NO. 27 CONDO	54/024
09422	BLUE JAY WOODLANDS PHASE 3	79/029	46915	KLOSTERMAN OAKS VILLAGE	101/066
18719	COVE SPRINGS CONDO	34/069	72162	PLEASANT VALLEY ADD	14/012
37656	HASTING'S RESUB * OF LOT 53 & 54, TAMPA & * TARPON SPRINGS LAND SUB	09/039	89280	TAMPA & TARPON SPRINGS LAND CO	H1/116
43102	INNISBROOK NO. 21 CONDO	17/012			
43103	INNISBROOK NO. 22 CONDO	17/074			
43104	INNISBROOK NO. 23 CONDO	20/001			
43105	INNISBROOK NO. 24 CONDO	20/060			